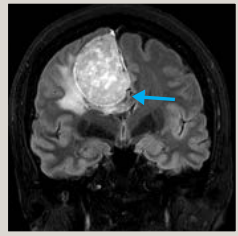


Medicare Rebateable Indications for General Practitioners

MRI Quick Reference Guide

Adults 16 years and over



MRI Brain Coronal image - Meningioma

Head

Unexplained seizure

Unexplained chronic headache with suspected intracranial pathology



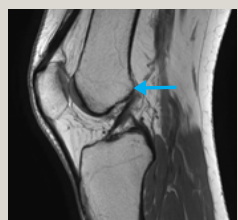
MRI Spine - Sagittal image - Cervical disc

Cervical Spine

Cervical radiculopathy

Cervical spine trauma

Adults 16 to 49 years



MRI Knee - sagittal image. Normal ACL top, abnormal ACL bottom

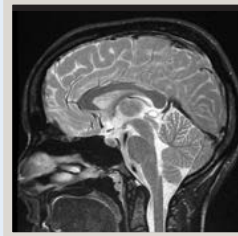
Knee

Following acute trauma with:

Inability to extend the knee suggesting the possibility of acute meniscal tear or

Clinical findings suggesting acute anterior cruciate ligament tear

Children under 16 years



MRI Brain - Normal sagittal image

Head

Unexplained seizure

Unexplained headache, significant pathology suspected

Paranasal sinus disease not responding to treatment



MRI Knee - Coronal image - Discoid lateral meniscus

Knee

Internal joint derangement



MRI Spine - Sagittal image - Normal cervical spine

*Spine - Cervical, Thoracic & Lumbar

Significant trauma

Unexplained neck/back pain with associated neurological symptoms

Unexplained back pain, significant pathology suspected



MRI Hip - Coronal image - Perthes disease

*Hip

Suspected septic arthritis

Suspected slipped capital femoral epiphysis

Suspected Perthes disease



MRI Wrist - Coronal image - Scaphoid fracture

*Wrist

Suspected scaphoid fracture



MRI Elbow - Normal coronal image

*Elbow

Significant fracture +/- avulsion injury suspected

* To be eligible for a Medicare rebate the patient must have an x-ray first.

PRC provides an extended hours MRI service 7 days a week for all General Practitioner referred MRI examinations. Appointments are available from 7.00am - 10.00pm.

PRC continues to accept GP referred non rebateable MRIs including over 50 MRI knee.

GP Referred MRI Locations

Armadale Hospital
3056 Albany Highway,
Armadale
Mon - Fri 8:30am - 5:00pm

Armadale North *
3043 Albany Highway,
Kelmscott
Mon - Fri 8:30am - 5:00pm

Booragoon *
260 Leach Highway
(corner Norma Road),
Booragoon
Mon - Fri 8:30am - 5:00pm
Sat 8:30am - 12:00pm

Hollywood Consulting Centre *
2/91 Monash Avenue,
Nedlands
Mon - Fri 8:30am - 5:00pm

Joondalup Shenton House *
Level 1, 57 Shenton Avenue,
Joondalup
Mon - Fri 8:30am - 5:00pm
Sat 8:30am - 12:00pm

Joondalup Health Campus
Shenton Avenue,
Joondalup
Mon - Fri 8:30am - 5:00pm

Midland *
21-23 Victoria Street,
Midland
Mon - Fri 8:30am - 5:00pm
Sat 8:30am - 12:00pm

Midland SJG Public Hospital
1 Clayton Street,
Midland
Mon - Fri 8:30am - 5:00pm

Mount Medical Centre
Level 2,
140 Mounts Bay Road, Perth
Mon - Fri 8:00am - 5:00pm
Sat 8:00am - 12:00pm

Murdoch
Ground Floor,
Wexford Medical Centre
3 Barry Marshall Parade, Murdoch
Mon - Fri 8:30am - 5:00pm

Murdoch Square
Ground Floor, 5 Bedbrook Row,
Murdoch
Mon - Fri 8:30am - 5:00pm

Nollamara *
217 Wanneroo Road,
Balcatta (corner Morley Drive)
Mon - Fri 8:30am - 5:00pm
Sat 8:30am - 12:00pm

Rockingham *
215 Willmott Drive,
Waikiki
Mon - Fri 8:30am - 5:00pm

Subiaco *
127 Hamersley Road,
Subiaco
Mon - Fri 8:30am - 5:00pm

* These sites welcome Medicare rebateable MRI scans from General Practitioners. MRI is also open outside hours by appointment.
PRC continues to accept GP referred non rebateable MRIs including over 50 MRI knee at all the above sites.