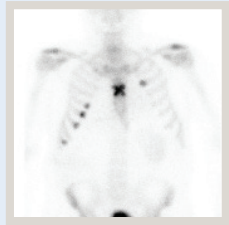


## Nuclear Medicine Quick Reference Guide for General Practitioners



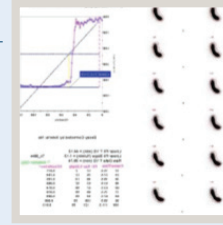
### Bone scan

Trauma with normal x-ray



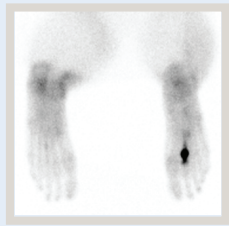
### Lung

Pulmonary emboli



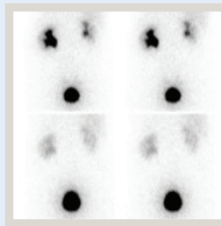
### Gastrointestinal - Bowel

Gastric and Colonic Transit  
Inflammatory bowel disease



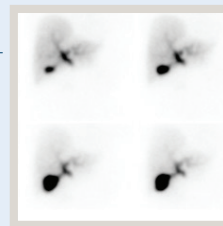
### Bone scan

Stress fractures



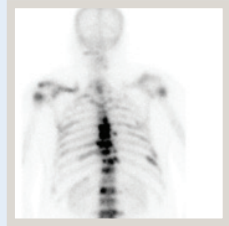
### Renal

Suspected obstruction  
e.g PUJ Assessment of  
differential renal function  
and scarring



### Gastrointestinal - Hepatobiliary

Acute and Chronic cholecystitis



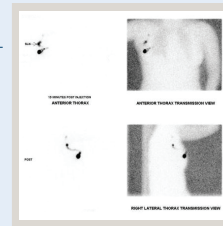
### Bone scan

Malignancy -  
diagnosis and staging



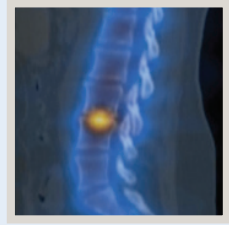
### Thyroid Scan

Hyperthyroidism



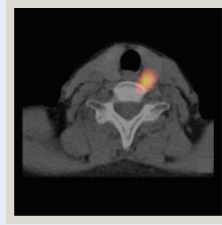
### Sentinel Lymph Node Breast

Pre-breast surgery



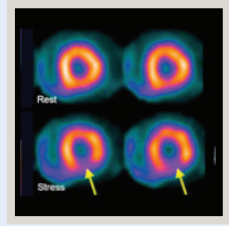
### Bone scan

Assessment of degenerative  
change - target treatment



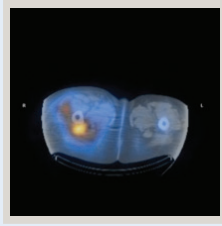
### Parathyroid scan

Parathyroid adenoma



### Heart

Myocardial Perfusion Scan  
Diagnosis of Coronary  
Artery Disease. Risk  
stratification in setting of  
previous CABG-stent.  
Preoperative evaluation



### Gallium

Bone and soft tissue sepsis

**Doctor Priority Line**  
for urgent bookings and enquiries  
**9599 3929**