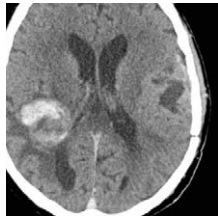


QUICK reference guide for CT referrals

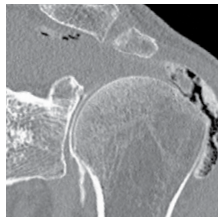
CT remains appropriate for imaging of Head, Chest, Abdomen, Spine, Extremities, Interventional and Angiography



Head

CT

Head injury-bone / brain assessment
Posterior fossa symptoms
Headache
Stroke investigation



Extremity

CT

Detection of subtle fractures
Work-up of complex fractures
Assessment of surgical bony fusion/
delayed # healing
Bony lesion work-up
Osteochondral defects



CT Arthrography

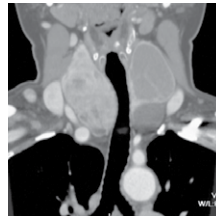
Shoulder / hip
- labral abnormalities
- instability
Elbow
- loose osteocartilaginous bodies
Knee
- meniscal tears / chondral defects
- loose osteocartilaginous bodies



Abdomen

CT

Lesion assessment / characterisation
Carcinoma staging
Renal colic - CT urogram
Inflammatory processes
Ascites, lymphadenopathy
Abdominal aorta aneurysm
Trauma



Neck

CT

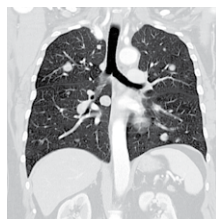
Tumour / mass assessment
Multi-nodular goitre
Malignancy and tumour staging



Spine

CT

Spinal canal stenosis
Radiculopathy
Spondylolisthesis
Assessment of surgical bony fusion
Acute crush # assessment



Chest

CT

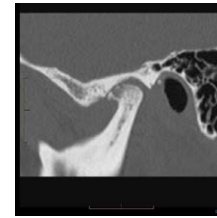
Haemoptysis
Trauma
Bronchiectasis / interstitial lung disease (HRCT)
Solitary / multiple pulmonary nodules
Mediastinal mass
Tumour staging



Interventional

CT

Facet joint injections
Nerve root / foraminal injections
Biopsies
Drainages
Cyst aspirations
Epidural injections



ENT

CT

Sinus disease
Facial bone #
Temporal bones (inflammatory disease)
TMJ's
Post-nasal space



CT Angiography

CT

Pulmonary angiogram - ? PE
Coronary angiogram with calcium scoring
Carotid / vertebral arteries
COW
Abdominal and thoraco - abdominal aorta
Renal arteries
Popliteal arteries
Subclavian arteries
Aorto-bifemoral + lower limb run-offs
Aortic arch
Extremity vessels



Cardiac

CT

CT Coronary Angiography (CTCA)
- Exclusion of significant coronary disease in low to intermediate risk patients.
- Assessment of atypical chest pain.
- Pre-assessment for non-cardiac surgery.
- Exclusion of developmental coronary anomaly or fistula.
- Assessment of coronary artery bypass grafts.
Coronary Calcium Scoring
- Assessment of coronary artery disease risk in asymptomatic patients.