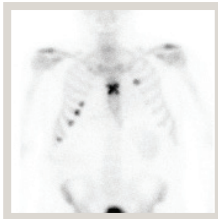


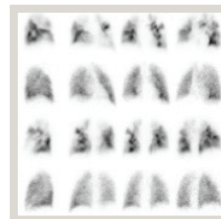
# QUICK reference guide for Nuclear Medicine

All myocardial perfusion scans performed at PRC are **BULK BILLED**



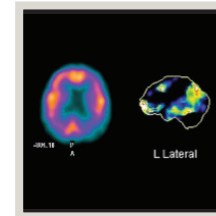
## Bone scan

Trauma with normal x-ray



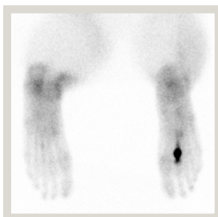
## Lung

Pulmonary emboli



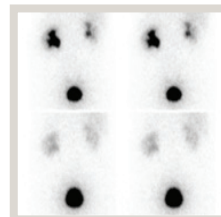
## Brain

Investigation of possible dementia



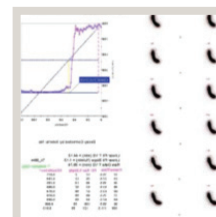
## Bone scan

Stress fractures



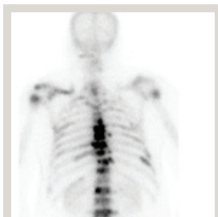
## Renal

Suspected obstruction  
e.g PUJ Assessment of differential renal function and scarring



## Gastrointestinal - Bowel

Gastric and Colonic Transit  
Inflammatory bowel disease



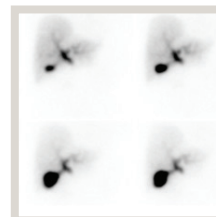
## Bone scan

Malignancy - diagnosis and staging



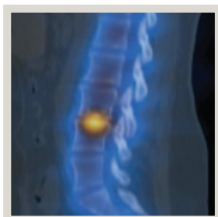
## Thyroid Scan

Hyperthyroidism



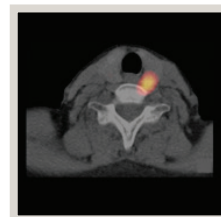
## Gastrointestinal - Hepatobiliary

Acute and Chronic cholecystitis



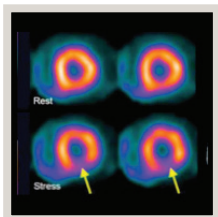
## Bone scan

Assessment of degenerative change - target treatment



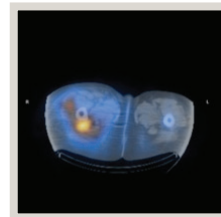
## Parathyroid scan

Parathyroid adenoma



## Heart

**Myocardial Perfusion Scan**  
Diagnosis of Coronary Artery Disease. Risk stratification in setting of previous CABG-stent. Preoperative evaluation



## Gallium - labelled WBC

Bone and soft tissue sepsis

## PRC Nuclear Medicine

- 4 Sites
- 9 Nuclear Medicine Physicians
- Dr Andrew Patrikeos
- Dr Geoff Groom
- Dr Nelson Loh
- Dr Michael McCarthy
- Dr Peter Swift
- Dr Tatiana Segard
- Dr Zeyad Al Ogaili
- Dr Judith Pohlen
- Dr Kenny Sek
- Image correlation
- Secure back up of previous studies

■  
PERTH  
RADIOLOGICAL  
CLINIC  
■

# QUICK reference guide for Nuclear Medicine

## Location Guide:

**BENTLEY HOSPITAL**

Bentley Health Service (B Block)  
33-56 Mills Street, Bentley  
Ph: 9232 3800  
Fax: 9350 5644  
Monday-Friday 8:30am-5:00pm  
Saturday 8:30am-12pm



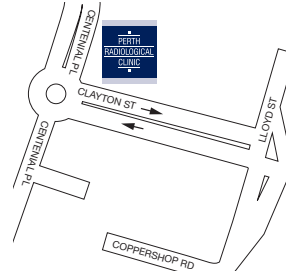
**JOONDALUP (HEALTH CAMPUS)**

Shenton Avenue  
Joondalup  
Ph: 9400 0500  
Fax: 9400 9033  
Monday-Friday 8:00am-5:00pm  
On-call service available 24/7



**MIDLAND PUBLIC HOSPITAL**

1 Clayton Street  
Midland  
Ph: 6274 3500  
Fax: 6274 3590  
Monday-Friday 8:30am-5:00pm



**MOUNT HOSPITAL**

Level 4, 140 Mounts Bay Rd  
Perth WA 6000  
Ph: 6228 6206  
Fax: 6228 6250  
Mon - Fri 8:30-5:00  
Sat 9:00 -12.00



Patients can now request an appointment online via our website and our staff will call them back to confirm their appointment. Please visit [www.perthradclinic.com.au](http://www.perthradclinic.com.au) for details.

■  
PERTH  
RADIOLOGICAL  
CLINIC  
■