

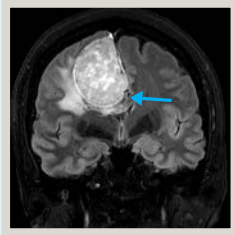
# Medicare Rebateable Indications for General Practitioners

## MRI Quick Reference Guide

New Medicare changes  
1st November  
2018

PERTH  
RADIOLOGICAL  
CLINIC

### Adults 16 years and over

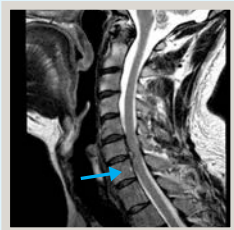


MRI Brain Coronal image - Meningioma

#### Head

Unexplained seizure

Unexplained chronic headache with suspected intracranial pathology



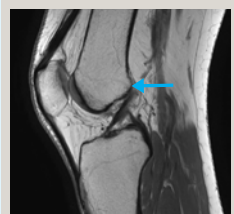
MRI Spine - Sagittal image - Cervical disc

#### Cervical Spine

Cervical radiculopathy

Cervical spine trauma

### Adults 16 to 49 years



MRI Knee - sagittal image. Normal ACL top, abnormal ACL bottom

#### Knee

Following acute trauma with:

Inability to extend the knee suggesting the possibility of acute meniscal tear

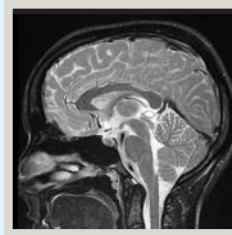
or

Clinical findings suggesting acute anterior cruciate ligament tear

#### CHANGES TO MEDICARE

Medicare rebateable  
Adult MRI knee is now only available for patients aged 16-49 years.

### Children under 16 years



MRI Brain - Normal sagittal image

#### Head

Unexplained seizure

Unexplained headache, significant pathology suspected

Paranasal sinus disease not responding to treatment



MRI Knee - Coronal image - Discoid lateral meniscus

#### Knee

Internal joint derangement

#### CHANGES TO MEDICARE

Children under 16 will no longer require a knee x-ray prior to an MRI investigation.



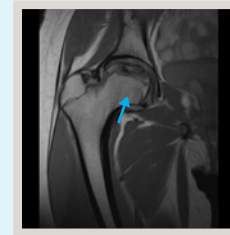
MRI Spine - Sagittal image - Normal cervical spine

#### \*Spine – Cervical, Thoracic & Lumbar

Significant trauma

Unexplained neck/back pain with associated neurological symptoms

Unexplained back pain, significant pathology suspected



MRI Hip - Coronal image - Perthes disease

#### \*Hip

Suspected septic arthritis

Suspected slipped capital femoral epiphysis

Suspected Perthes disease



MRI Wrist - Coronal Image - Scaphoid fracture

#### \*Wrist

Suspected scaphoid fracture



MRI Elbow - Normal coronal image

#### \*Elbow

Significant fracture +/- avulsion injury suspected

\*To be eligible for a Medicare rebate the patient must have an x-ray first.

### PRC provides out of hours MRI appointments

The Practice provides an extended hours MRI service 7 days a week for all General Practitioner referred MRI examinations. Appointments are available from 7am until 10.00pm.

Perth Radiological Clinic continues to accept GP referred non rebateable MRIs including over 50 MRI knee.

# GP Referred MRI Locations

\*These sites welcome Medicare rebateable MRI scans from General Practitioners

**\*ARMADALE**

3056 Albany Highway  
Armadale  
**Ph: 9391 0100**  
Fax: 9391 2019  
Mon - Fri: 8.30 - 5.00

**\*BOORAGOON**

260 Leach Highway  
Cnr Norma Road  
**Ph: 9333 5600**  
Fax: 9317 8368  
Mon - Fri: 8.30 - 5.00  
Sat: 9.30 - 12.00

**\*JOONDALUP SHENTON HOUSE**

Level 1 Shenton House  
57 Shenton Ave (cnr Grand Blvd)  
**Ph: 9400 0600**  
Fax: 9400 0690  
Mon - Fri: 8.00 - 5.00  
Sat: 8.30 - 12.00

**\*MIDLAND**

Victoria Street Radiology  
21-23 Victoria Street  
**Ph: 9374 2600**  
Fax: 9374 2691  
Mon - Fri: 8.30 - 5.00  
Sat: 8.30 - 12.00

**\*MURDOCH**

Ground Floor, Wexford Medical Centre,  
St John of God Hospital  
Murdoch  
**Ph: 9312 7800**  
Fax: 9312 7878  
Mon - Fri: 8.30 - 5.00

**\*NOLLAMARA**

217 Wanneroo Road  
Balcatta  
**Ph: 9440 7400**  
Fax: 9440 7490  
Mon - Fri: 8.30 - 5.00  
Sat: 8.30 - 12.00

**\*ROCKINGHAM**

215 Willmott Drive  
Waikiki  
**Ph: 9599 3900**  
Fax: 9592 9893  
Mon - Fri: 8.30 - 5.00

**\*SUBIACO**

Magnetic Resonance Centre  
127 Hamersley Road  
**Ph: 9380 0900**  
Fax: 9380 4188  
Mon - Fri: 8.30 - 5.00

Perth Radiological Clinic continues to accept GP referred non rebateable MRIs including over 50 MRI knee at these sites.